

▶ **CREATING THE SHORTEST PATH BETWEEN PATIENT AND THERAPY.**

Shrinking margins and coverage challenges are driving the need for more direct patient access paths, generating a growing desire to develop strategies that extend beyond traditional distribution channels and focus on greater convenience and more personalized patient services. KnippeRx provides Custom Pharmacy Solutions that help your brand overcome these growing challenges.



- ▶ *A value-based, independent specialty pharmacy.*
- ▶ *Proven solutions that help eliminate barriers to therapy.*
- ▶ *A patient-centric approach for improved outcomes.*

**COMMERCIAL SOLUTIONS**

- ▶ Specialty Lite
- ▶ Hub Lite
- ▶ Direct To Patient Cash
- ▶ White Label Pharmacy

**KnippeRx Solutions**

Designed to overcome barriers to access for much needed therapies such as:

- ▶ Payor Coverage Restrictions
- ▶ High PA's
- ▶ Generic competition
- ▶ Complex REMS issues
- ▶ Competitive therapeutic space

**NON-COMMERCIAL SOLUTIONS**

- ▶ Patient Assistance
- ▶ Product Replacement
- ▶ Bridge/Quick Start
- ▶ Clinical Trials

**KnippeRx Solutions**

Designed to facilitate patient access to needed therapy utilizing processes which:

- ▶ Simplify enrollment and qualification processing
- ▶ Increase program efficiency and reduce operating cost
- ▶ Ensure the shortest path between patient and therapy

**KNIPPER INTEGRATED SERVICES**

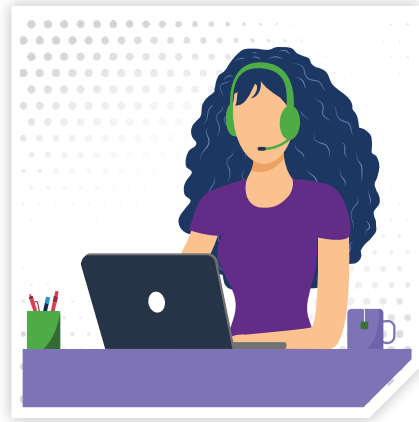
- ▶ Custom Distribution
- ▶ Solutions for Emerging Pharma
- ▶ Kitting and Repackaging

**KnippeRx Solutions**

Integrated services that lower total operating cost and administrative burden through:

- ▶ Consolidated contracting
- ▶ Reduced total distribution cost
- ▶ Reduced service integration cost
- ▶ Greater economies of scale

# The KnippeRx Advantage Includes:



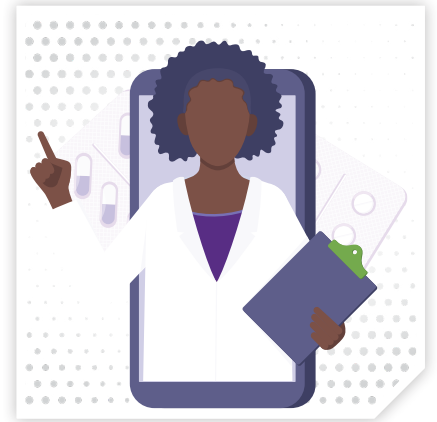
## INFRASTRUCTURE

- ▶ Multiple Dispensing Locations
- ▶ 450+ Seat Patient Support Center
- ▶ Licensed to Dispense in All 50 States
- ▶ Licensed to Dispense Schedule II-V Drugs
- ▶ Expandable Linear Dispensing Unit (LDU)
- ▶ Over 15,000 Pallet Locations of Ambient and CRT Storage
- ▶ Over 400 Pallet Locations of Refrigerated Storage
- ▶ All Product Storage Fully Temperature Mapped



## TECHNOLOGY

- ▶ Support for More Than 200 Languages
- ▶ Electronic Benefits Verification
- ▶ Integrated Electronic Prior Authorization
- ▶ Integrated CRM for Case Management
- ▶ Digital/Mobile Patient Engagement Tools
- ▶ Online Patient & HCP Portals
- ▶ Robust APIs for 3rd Party Integration
- ▶ Integrated Reporting and Analytics Solution
- ▶ EDI Capable



## EXPERIENCE

- ▶ 35+ years in business
- ▶ 800,000 sq ft facility space
- ▶ Supporting 500 brands across 100+ manufacturers
- ▶ 230+ years of combined pharmacy experience
- ▶ 70+ years of combined pharmacy management experience
- ▶ 100+ state dispensing licenses
- ▶ 100+ therapeutic areas
- ▶ Class A prescription accuracy 99.98%
- ▶ Net promoter score >90



1-85-KnippeRx  
(1-855-647-7379)



[www.knippeRx.com](http://www.knippeRx.com)



[info@knippeRx.com](mailto:info@knippeRx.com)